

### TERMS OF REFERENCE A: DIMINUTION OF SOCIAL AMENITY

- Loss of community gathering places and streets/paths for cycling & walking
- Loss of shade & comfort & sense of place
- Impact on health & well-being ( air quality & heat related morbidity)
- Impact of loss of trees on rise in water table in flood-prone area

### TERMS OF REFERENCE B: APPROPRIATENESS & ADEQUACY OF FINANCIAL COMPENSATION

- Compensation due to breach of contract re tree protection
- \$ Value of large trees
- 10 year Arboriculture Maintenance program

### TERMS OF REFERENCE C: EFFECTIVENESS OF THE GOVERNMENT'S COMMUNICATION WITH RESIDENTS

- Redacted GIPA
- Response to public meetings

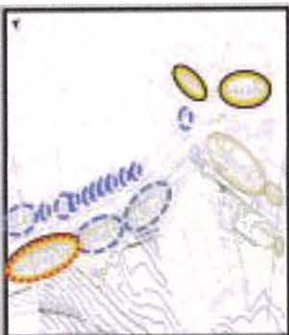
### TERMS OF REFERENCE D: OTHER MATTERS

- Contract procedural issues

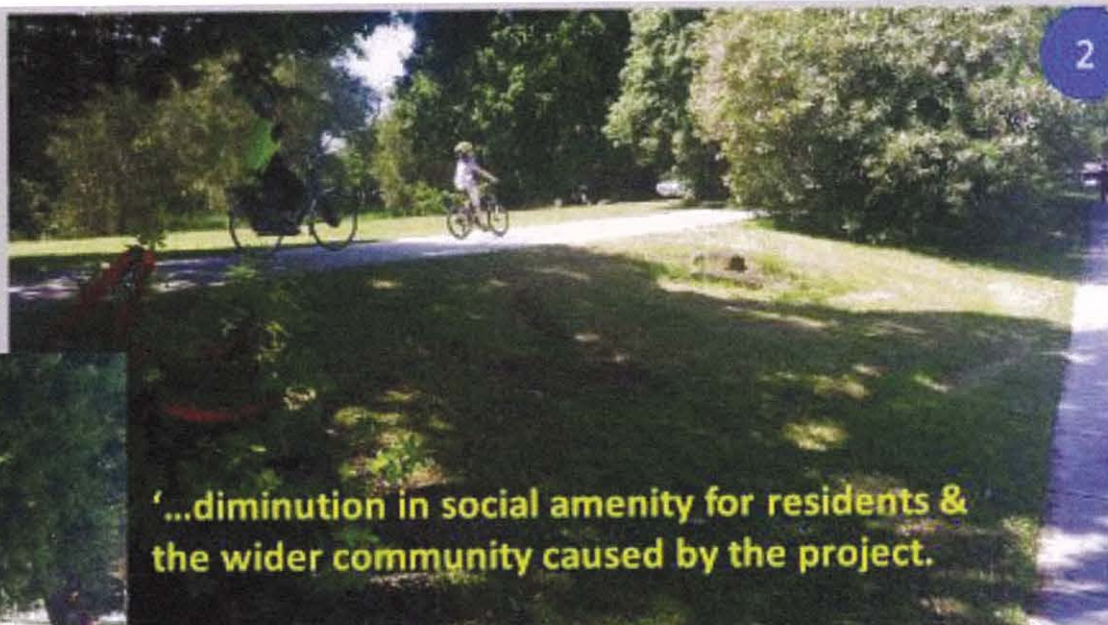
Document tendered by  
Saving Sydney Trees  
 Received by  
Brett Rodgers  
 Date: 20 / 8 / 18  
 Resolved to publish ☒ Yes / No



**Saving Sydney's Trees Response to the Inquiry into the CSELR 2018**



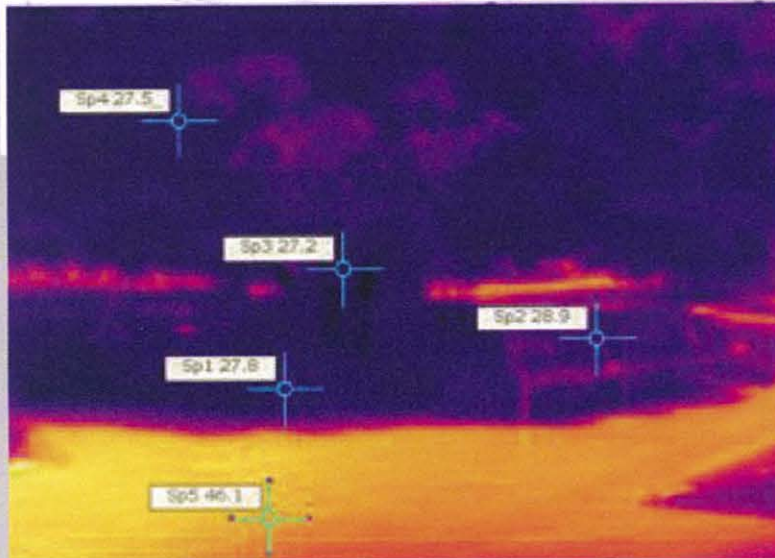
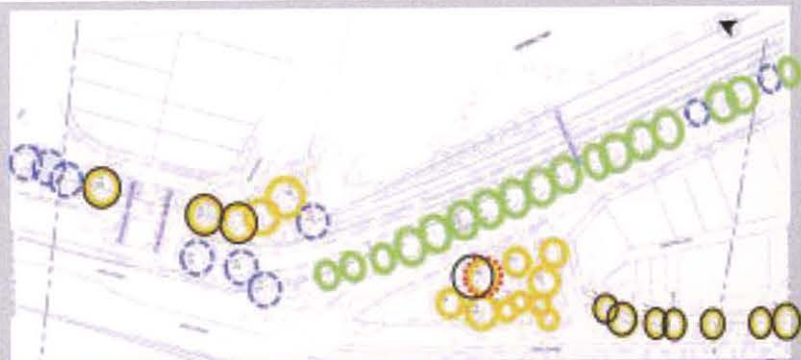
2



**Maiden's Walk beside Alison Road – now gone!**



**Saving Sydney's Trees Response to the Inquiry into the CSELR 2018**  
**Terms of Reference A: Compensation due to loss of community recreation spaces**



**Alison Rd - Shaded walk no longer exists**

Source: Micro-Urban-Climatic Thermal Emissions: in a Medium-Density Residential Precinct, City Futures Research Centre, UNSW

*Heat Image indicates **enormous** daytime difference (about 18C) between radiant temperature of paved walkway & shade under tree in Victoria Park*



**Saving Sydney's Trees Response to the Inquiry into the CSELR 2018**

**ToR, A: Compensation due to loss of shade & potential heat-related morbidity**

## Impact on Health & Well-being due to loss of trees in public space

Temperature Range (°C)	Effects	Potential outcomes
20 - 27°C	Comfort Zone	Maximum efficiency
As temperature increases	<u>Discomfort:</u> <ul style="list-style-type: none"> <li>• Increased irritability</li> <li>• Loss of concentration</li> <li>• Loss of efficiency in mental tasks</li> </ul>	Mental Problems
	<u>Increase of errors:</u> <ul style="list-style-type: none"> <li>• Loss of efficiency in mental tasks</li> <li>• More incidents</li> </ul>	Psycho-physiological problems
	<u>Increase problems doing heavy work:</u> <ul style="list-style-type: none"> <li>• Disturbed water and electrolyte balance</li> <li>• Heavy load on heart and circulation</li> <li>• Fatigue and threat of exhaustion</li> </ul>	Physiological problems
35 - 40°C	Limit of high temperature tolerance	



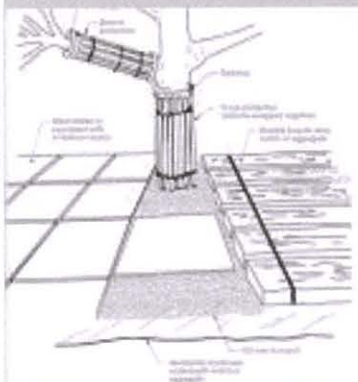
### Problems and Symptoms caused by Hot Temperatures

Saving Sydney's Trees Response to the Inquiry into the CSELR 2018

**Terms of Reference A: Compensation due to loss of shade & potential heat-related morbidity**

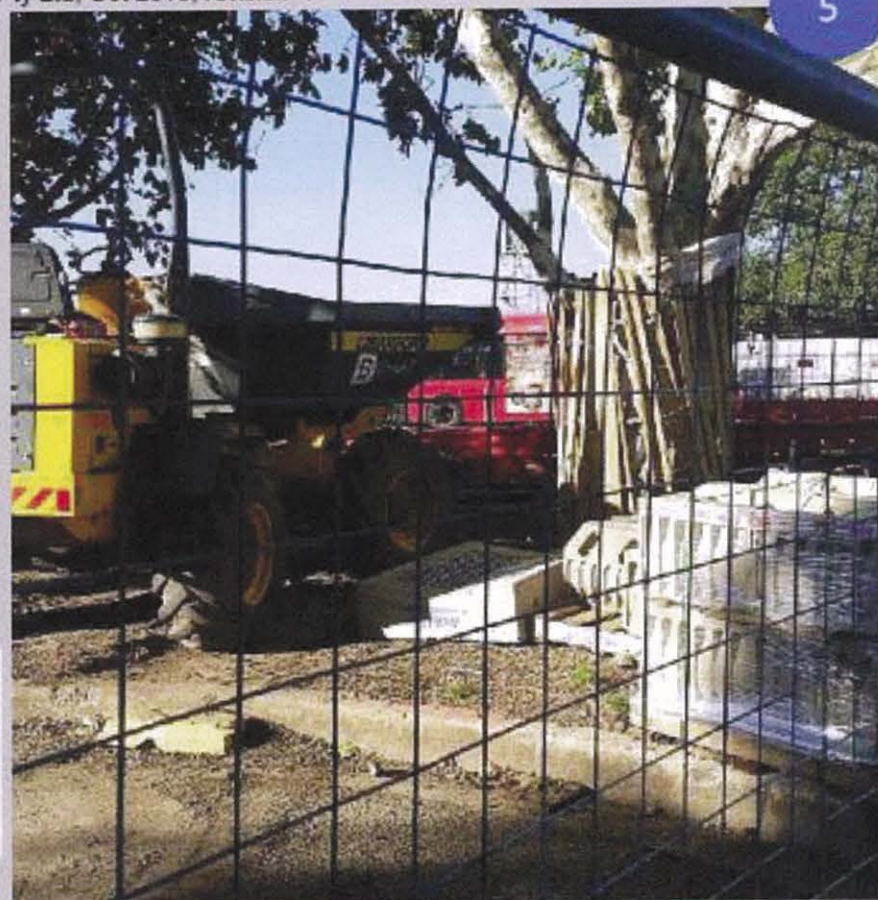


## Appendix A: Compliance Matrix



**Note non-compliance of branch protection and tree root compaction with heavy vehicle movement & storage of material within the TPZ root zone**

*MCoA B47B: Proponent shall employ construction techniques that minimise impacts to tree root zones at all times along Anzac Parade (its intersection with Alison Road), Alison Road and Wansey Road, including but not limited to those identified in environmental management measure T4 within table 4.2 of the Modification Report.*



**Saving Sydney's Trees Response to the Inquiry into the CSELR 2018**  
**Terms of Reference B: Compensation due to breach of contract re tree protection**

These 2 trees were issued a **DO NOT TOUCH** order which included their roots in the Consent Conditions (B47)

Clearly there was no intention to comply with B48 and B47 by ACCIONA or TfNSW.



Note removal of bollards & flags

Note heavy vehicle parked on root zone

*"Tree Protection Zone fence should be located on a radius of 5.5M from the centre of the trunk. The TPZ can be contained by plastic bollards and connected with high visibility plastic tape. The base plates of the bollards should be pegged to the ground to prevent the line marking of the TPO from being altered."* Arboricultural Impact Assessment Revision 7 , 25/8/16, page 3



**Saving Sydney's Trees Response to the Inquiry into the CSELR 2018**  
**ToR B: Compensation due to breach of contract re tree protection**



*The orange plastic poles that demarcate the TPZ (Tree Protection Zone) have been moved inside the actual TPZ. The UTM Audit report, in all instances, indicates TPZ's are compliant.*

*We question the reliability of these statements when evidence indicates the moving of these barricades for vehicle parking at will. The Bulldozer working with in reach of the overhead limbs. This machine was witnessed impacting these limbs.*



**Saving Sydney's Trees Response to the Inquiry into the SELR 2018**

**ToR B: Compensation due to breach of contract re tree protection**

Cahill Expressway 1980s



1<sup>st</sup> figs felled, Cahill Expressway, July 2003



**Cahill Expressway – Ultimate ENDGAME due to root and branch damage**



**Saving Sydney's Trees Response to the Inquiry into the CSELR 2018**

**For B: Compensation to ensure adequate care & avoid loss of remaining trees**

# Estimate for Remedial Tree works for CSELR Impact

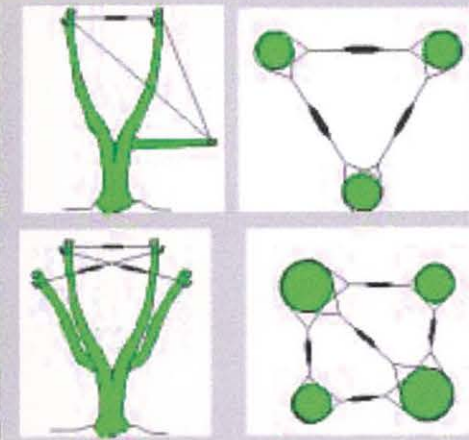
Total \$10,920.00 per tree

800 trees = \$8,736,000.00 per year

10 year contract = \$80,736,000.00

9

1. Initial Ground & Aerial Inspection
2. Arboricultural Impact Assessment (AIA)
3. Root Mapping & Remediation
4. Bracing weakened branches by Cobra method
5. Selective pruning
6. Insect control
7. Fertilising & Weed Control
8. Electronic Monitored Irrigation



Best Practice Tree Management

**cobra** - dynamic tree support system specially designed to be strong, gentle, flexible and shock-absorbing resulting from scientific research.



Saving Sydney's Trees Response to the Inquiry into the CSELR 2018

**TERMS OF REFERENCE B: APPROPRIATE FINANCIAL COMPENSATION**

## Green Infrastructure for Cities -It's all about trees!!!

*Amount of solar radiation canopy intercepts relates to canopy size, type and angle of leaves, depth & density of the canopy layers.*

*Tree attributes providing best shade include leaf area, high branching density, multiple canopy layers, canopy transmissivity, canopy size and projection and canopy ventilation.*



10



***Sydney's wonderful figs provide all the attributes needed.***

**Saving Sydney's Trees Response to the Inquiry into the CSELR 2018**

**Terms of Reference, B: Compensation to ensure health of remaining trees**